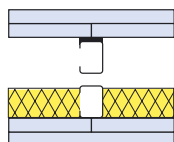


# Summary Table - Steel Frame Fire & Acoustic Systems

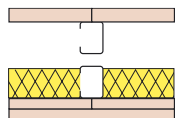
## Steel Frame Fire & Acoustic Systems

### Construction

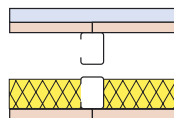
- Timber framing constructed using dimensions and height as determined by NZS 3604 stud tables.
- Use full-length sheets where possible.
- Horizontal and vertical fixing permitted.
- Sheet edges must be over solid framing.
- Sheet joints should be staggered between layers.
- Fastener heads stopped. Sheet joints should be reinforced and stopped in accordance with AS/NZS 2589.1.
- Place a bead of fire and acoustic sealant to the perimeter of the first layer and bed the second layer to the bead.



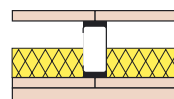
3 Two layers of board each side of steel studs over Soundstop strips to one side only, at 600mm centres. Fasten with Bugle head, Drywall Screws, Inner 13mm: 40mm x 6g Outer 13mm: 50mm x 7g



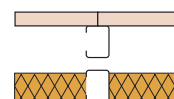
4 One layer one side and two layers of board the other side of double steel studs at 600mm centres. Fasten with Bugle head, Drywall Screws, Inner 10mm: 32mm x 6g Inner 13mm: 40mm x 6g Inner 16mm: 40mm x 6g Outer 10mm: 40mm x 7g Outer 13mm: 50mm x 7g



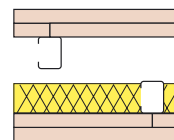
5 Two layers of board each side of double steel studs at 600mm centres. Fasten with Bugle head, Drywall Screws, Inner 10mm: 32mm x 6g Inner 13mm: 40mm x 6g Outer 10mm: 40mm x 7g Outer 13mm: 50mm x 7g



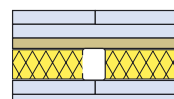
1 Two layers of board with Soundstop strips each side of steel studs at 600mm centres. Fasten with Bugle head, Drywall Screws, Inner 10mm: 32mm x 6g Inner 13mm: 40mm x 6g Outer 13mm: 50mm x 7g



2 One layer of board each side of steel studs at 600mm centres. Fasten with Bugle head, Drywall Screws, 16mm: 40mm x 6g



7 Two layers of board each side of steel studs, at 600mm centres and offset by 300mm from studs in opposing wall. Fasten with Bugle head, Drywall Screws, Inner 13mm: 40mm x 6g Outer 13mm: 50mm x 7g



6 Two layers of board each side of steel studs at 600mm centres with resilient channel one side. Fasten with Bugle head, Drywall Screws, Inner 13mm: 40mm x 6g Outer 13mm: 50mm x 7g

Fire Rating	Detail	BPB System	Fire Rating	Board	Layers	Thickness mm	Load Bearing or Non Load Bearing	Stud wall construction	Stud size mm	Stud wall gap mm	Stud centres mm	Insulation type	Insulation thickness mm	Board Fixing centres mm	Weight of system kg's per m <sup>2</sup>	STC Rating	Page
30	5	TGSLA30	30/30/30	BPB Firestop	2/2	10	LB	Double	63x32	25	600	R1.8	75	300	31.04	57	47
	4	TGSLA30a	30/30/30	BPB Firestop	2/1	10/16	LB	Double	63x32	25	600	R1.8	75	300	27.95	57	48
	2	TGSLA30b	30/30/30	BPB Firestop	1/1	16	LB	Double	63x32	25	600	R2.2	100	300	24.86	52	49
	1	TGSLA30bf	30/30/30	BPB Firestop	2/2	10/13	LB	Single	92x32		600	R1.8	75	300	35.68	55	50
	2	TGSLA30c	30/30/30	BPB Firestop	2/2	10/13	LB	Double	63x32	25	600	R1.8	100	300	19.22	63	51
	7	TGSLA30d	30/30/30	BPB Firestop	2/2	13	LB	Double	63x32		600	R1.8	75	300	40.32	58	52
	1	TGSLA30f	30/30/30	BPB Regular	2/2	13	LB	Single	63x32		600	R1.8	100	300	34.64	55	53
	3	TGSLA30fa	30/30/30	BPB Regular	2/2	13	LB	Double	63x32	25	600	R1.8	75	300	34.64	55	54
	4	TGSLA30a3	-/30/30	BPB Firestop + Regular	2/1	10/13	NLB	Double	63x32	25	600	R1.8	75	300	24.18	56	55
	4	TGSLA30a4	30/30/30	BPB Firestop	2/1	10/13	LB	Double	63x32	25	600	R1.8	75	300	25.60	57	56
5	TGSLA30a5	30/30/30	BPB Firestop + Regular	2/2	10/13	LB	Double	63x32	25	600	R1.8	75	300	32.84	62	57	
6	TGSLA30r	30/30/30	BPB Regular	2/2	13	LB	Single	63x32		600	R1.8	75	300	34.64	56	58	
60	5	TGSA60	-/60/60	BPB Firestop + Regular	2/2	13	NLB	Double	63x32	25	600	R1.8	75	300	37.48	58	59
	7	TGSA60a	-/60/60	BPB Regular	2/2	13	NLB	Double	63x32		600	R1.8	75	300	34.64	56	60
	1	TGSA60d	-/60/60	BPB Duraline	1/1	13	NLB	Double	63x32		600	R2.2	100	300	19.22	52	61
	1	TGSA60f	-/60/60	BPB Firestop + Regular	2/2	13	NLB	Single	63x32		600	R1.8	75	300	37.48	55	62
	7	TGSLA60	60/60/60	BPB Firestop	2/2	13	LB	Double	92x35	25	600	R1.8	75	200	40.32	63	63
	4	TGSLA60a	-/60/60	BPB Firestop	2/1	13	NLB	Double	63x32	25	600	R1.8	75	300	30.24	59	64
1	TGSLA60b	60/60/60	BPB Firestop	2/2	13	LB	Single	92x32		600	R1.8	75	200	40.32	56	65	
6	TGSLA60r	60/60/60	BPB Firestop + Regular	2/2	13	LB	Single	63x32		600	R1.8	75	300	37.48	56	66	