

Acoustic steel frame fire rated systems

Product	BPB Plasterboard
System	Acoustic steel frame wall system
System Number	TGSA60
Fire Resistance Rating	-/60/60
Plasterboard System	1 Layer 13mm BPB Regular and 1 Layer 13mm BPB Firestop each side

Framing

Double stud steel framing constructed using framing dimensions and height as determined by NZS 4203 stud tables for non-loadbearing walls. The minimum stud size is 63 x 32 x 0.55mm. Studs are placed at 600mm centres maximum. Nogs are only required at horizontal joints. Walls are separated by minimum 25mm.

Wall Height

Wall may be maximum 3.6 metres high with studs at 600mm centres. Framing dimensions and wall height are determined by NZS 4203 stud tables for non-loadbearing partitions.

Lining

One inner layer of 13.0mm BPB Firestop and one outer layer of 13.0mm BPB Regular fixed each side of steel framing. Use full-length sheets where possible. The outer layer of 13.0mm BPB Regular can be replaced with 13.0mm BPB Aquastop.

Fixing

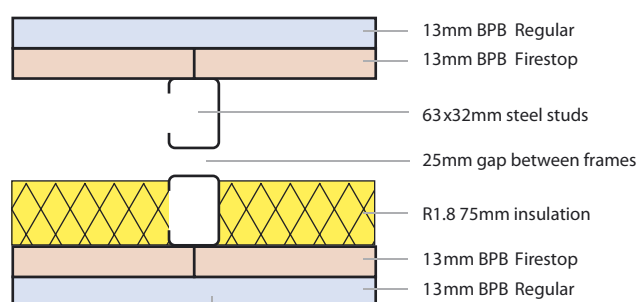
Fix inner and outer layers at minimum 300mm centres to perimeter of sheets and to intermediate studs and nogs. Horizontal and vertical fixing permitted. Sheet joints staggered between layers. All vertical sheet edges must be made over solid framing.

Acoustic Control

Wall cavities must be filled with R 1.8 nominal 75mm fibreglass insulation or other insulation of equivalent performance between studs on one wall only. Place a bead of acoustical sealant to the perimeter of the first layer and bed the second layer to the bead.

Jointing

All fastener heads stopped and all sheet joints reinforced with paper jointing tape to outside layer only and stopped in accordance with AS/NZS 2589.1.



Fasteners	Drywall Screws
	12mm from sheet edge
Inner 13mm	40mm x 6g Bugle head
Outer 13mm	50mm x 7g Bugle head

