

Product	BPB Plasterboard
System	Acoustic steel frame wall system
System Number	TGSLA30a5
Fire Resistance Rating	30/30/30
Plasterboard System	1 Inner Layer 10mm BPB Firestop and 1 Outer Layer 13mm BPB Regular each side

Framing

Double stud steel framing constructed using framing dimensions and height as determined by NZS 4203 stud tables for loadbearing walls. The minimum stud size is 63 x 32 x 0.55mm. Studs are placed at 600mm centres maximum. Nogs are only required at horizontal joints. Walls are separated by minimum 25mm.

Wall Height

Wall may be maximum 3.6 metres high with studs at 600mm centres. Framing dimensions and wall heights are determined by NZS 4203 stud tables for loadbearing partitions.

Lining

One inner layer of 10.0mm BPB Firestop and one outer layer of 13.0mm BPB Regular each side of steel framing. Use full-length sheets where possible.

Fixing

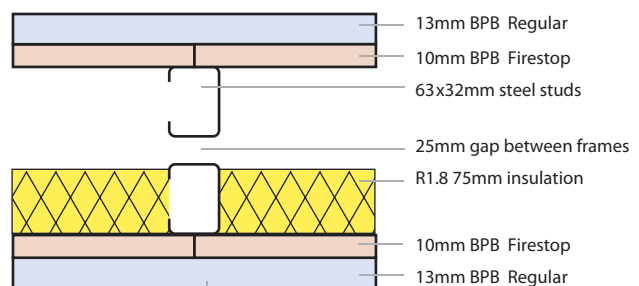
Fix inner and outer layers at minimum 300mm centres to perimeter of sheets and to intermediate studs and nogs. Horizontal and vertical fixing permitted. Sheet joints staggered between layers. All vertical sheet edges must be made over solid framing.

Acoustic Control

Wall cavities must be filled with R 1.8 nominal 75mm fibreglass insulation or other insulation of equivalent performance between studs on one wall only. Place a bead of acoustical sealant to the perimeter of the first layer and bed the second layer to the bead.

Jointing

All fastener heads stopped and all sheet joints reinforced with paper jointing tape to outside layer only and stopped in accordance with AS/NZS 2589.1.



Fasteners	Drywall Screws
	12mm from sheet edge
Inner 10mm	32mm x 6g Bugle head
Outer 13mm	40mm x 7g Bugle head

