

Acoustic steel frame fire rated systems

Product	BPB Plasterboard
System	Acoustic steel frame wall system
System Number	TGSLA60
Fire Resistance Rating	60/60/60
Plasterboard System	2 Layers 13mm BPB Firestop both sides

Framing

Double stud steel framing of nominal 92mm x 35mm and gauge of 1.15 BMT or SMG. Steel channels are fixed to the ceiling and floor and studs are placed at 600mm centres maximum and offset by 300mm from studs in opposing wall. There is no end gap between stud ends and channels. Studs are to be fixed to channels top and bottom using 8g screws. Walls are separated by minimum 25mm.

Wall Height

Wall may be maximum 3 metres high with studs at 600mm centres. Walls over 3 metres high must be separately designed for serviceability and structural loading at normal ambient temperatures in accordance with NZS 3604.

Lining

Two layers of 13.0mm BPB Firestop fixed each side of double stud steel framing. Use full-length sheets where possible.

Fixing

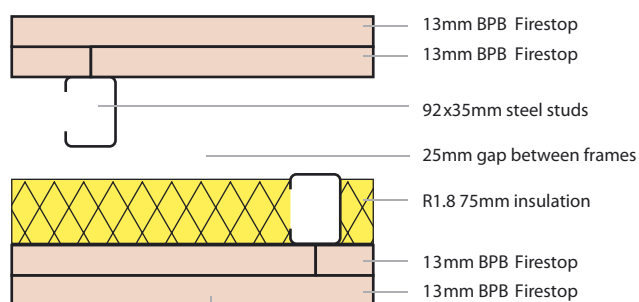
Fix inner and outer layers at 200mm centres to perimeter of sheets and 300mm to intermediate studs. Horizontal and vertical fixing permitted. Nogs at 800mm for vertical fixing and 1200mm for horizontal fixing. All sheet edges must be made over solid framing.

Acoustic Control

Wall cavities must be filled with R 1.8 nominal 75mm fibreglass insulation or other insulation of equivalent performance between studs on one wall only. Place a bead of acoustical sealant to the perimeter of the first layer and bed the second layer to the bead.

Jointing

All fastener heads stopped and all sheet joints reinforced with paper jointing tape to outside layer only and stopped in accordance with AS/NZS 2589.1.



Fasteners	Drywall Screws
	12mm from sheet edge
Inner 13mm	40mm x 6g Bugle head
Outer 13mm	50mm x 7g Bugle head

