

Product	BPB Plasterboard
System	Steel frame wall system
System Number	TGSL30b
Fire Resistance Rating	30/30/30
Plasterboard System	1 Inner Layer 10mm BPB Firestop and 1 Outer Layer 13mm BPB Firestop each side

### Framing

Steel stud framing of nominal 92 x 32mm and gauge of 1.15 BMT or SMG. Steel channels are fixed to the ceiling and floor and studs are placed at 600mm centres. There is no end gap between stud ends and channels. Studs are to be fixed to channels top and bottom using 8g screws.

### Wall Height

Wall may be maximum 3 metres high with studs at 600mm centres. Walls over 3 metres high must be separately designed for serviceability and structural loading at normal ambient temperatures.

### Lining

One inner layer of 10.0mm BPB Firestop and one outer layer of 13.0mm BPB Firestop fixed each side. Use full-length sheets where possible.

### Fixing

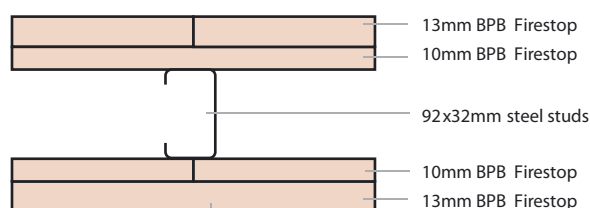
Fix sheets at 200mm centres to perimeter of sheets and 300mm to intermediate studs. Fixings should start at 50mm from top or bottom of the wall. Sheet joints do not need to be staggered between faces on the opposite sides of the frame. Horizontal and vertical fixing permitted. No nogs are required for horizontal fixing provided sheet joints are staggered by at least 400mm between layers. All sheet edges must be made over solid framing.

### Insulation

Wall cavities are optionally filled with R 1.8 nominal 75mm fibreglass insulation or equivalent.

### Jointing

All fastener heads stopped and all sheet joints reinforced with paper jointing tape to outside layer only and stopped in accordance with AS/NZS 2589.1.



Fasteners	Drywall Screws
	12mm from sheet edge
Inner 10mm	32mm x 6g Bugle head
Outer 13mm	50mm x 7g Bugle head