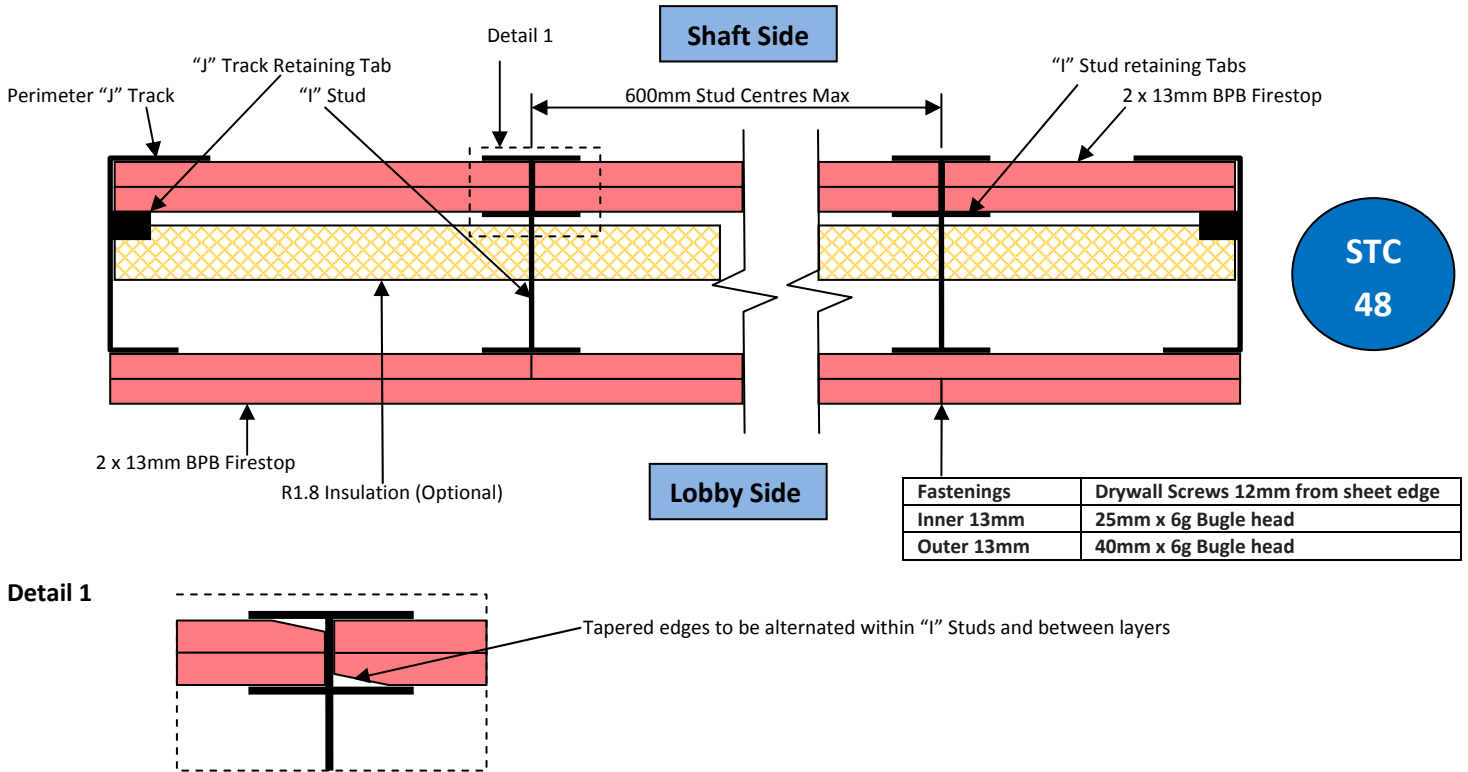


# BPB Shaftwall fire rated wall systems

Product	BPB Shaftwall System
System Number	TGSW120-90
Fire Resistance Rating	Fire from Shaft Side -/120/120 Fire from Landing side -/90/90
Plasterboard System	2 layers of 13.0mm BPB Firestop each side



## Framing

Steel framing constructed using 102 x 36 x 0.55mm "I Studs" positioned at 600mm centres within the 102mm perimeter "J Track". The perimeter "J Track" is to be installed using 6mm x 40mm expansion bolts at 600mm centres to the full perimeter of the opening with the short leg of the track towards the lobby side.

## Acoustic Control (Shaft Side)

Place a bead of acoustic sealant to the entire perimeter of each 600mm wide sections prior to installing the plasterboard.

## Lining shaft Side

Two layers of 13.0mm BPB Firestop cut 600mm wide are to be positioned within each of the "I Studs". The retaining tabs are to be folded over to secure the plasterboard sheets within the "I Studs". The distance between the adjacent wall perimeter "J Track" and the first and last "I Studs" are to be no greater than 600mm.

## Lining the Lobby Side

Two layers of 13.0mm BPB Firestop fixed to the lobby side. All sheet joints to be formed over framing and sheet edge joints are to be staggered between layers.

## Fixing (Lobby side)

Fix inner and outer layers at 300mm centres to sheet perimeter and 300mm centres to the intermediate studs. Only vertical fixing is permitted.

## Acoustic Control (Lobby Side)

Place a bead of acoustic sealant to the entire perimeter of the wall.

## Insulation

Wall cavities are optionally filled with R1.8 nominal 75mm fiberglass insulation or equivalent.

## Jointing

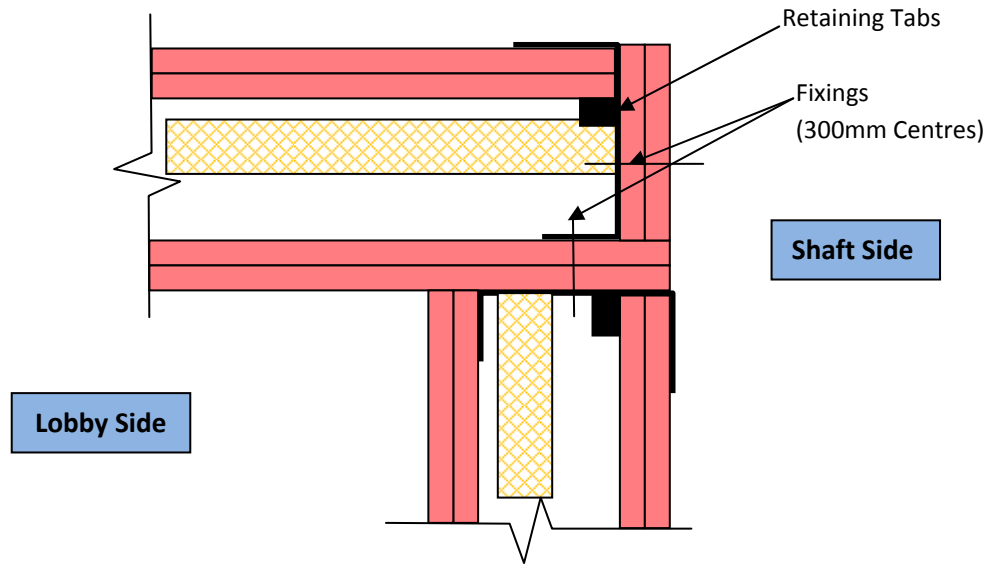
All fastener heads stopped and all sheet joints reinforced with paper jointing tape and stopped in accordance with AS/NZS 2589.1.

## Wall Heights

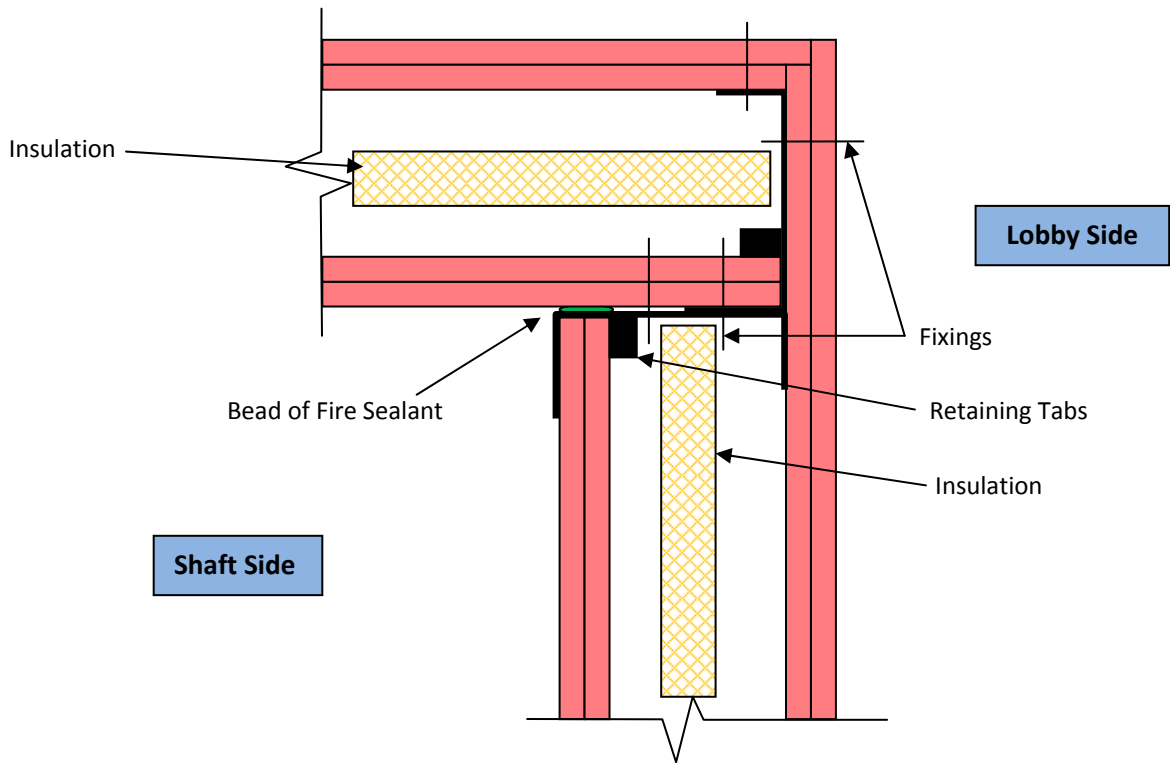
3.6m maximum

# BPB Shaftwall fire rated wall systems

## External Corner Construction Detail

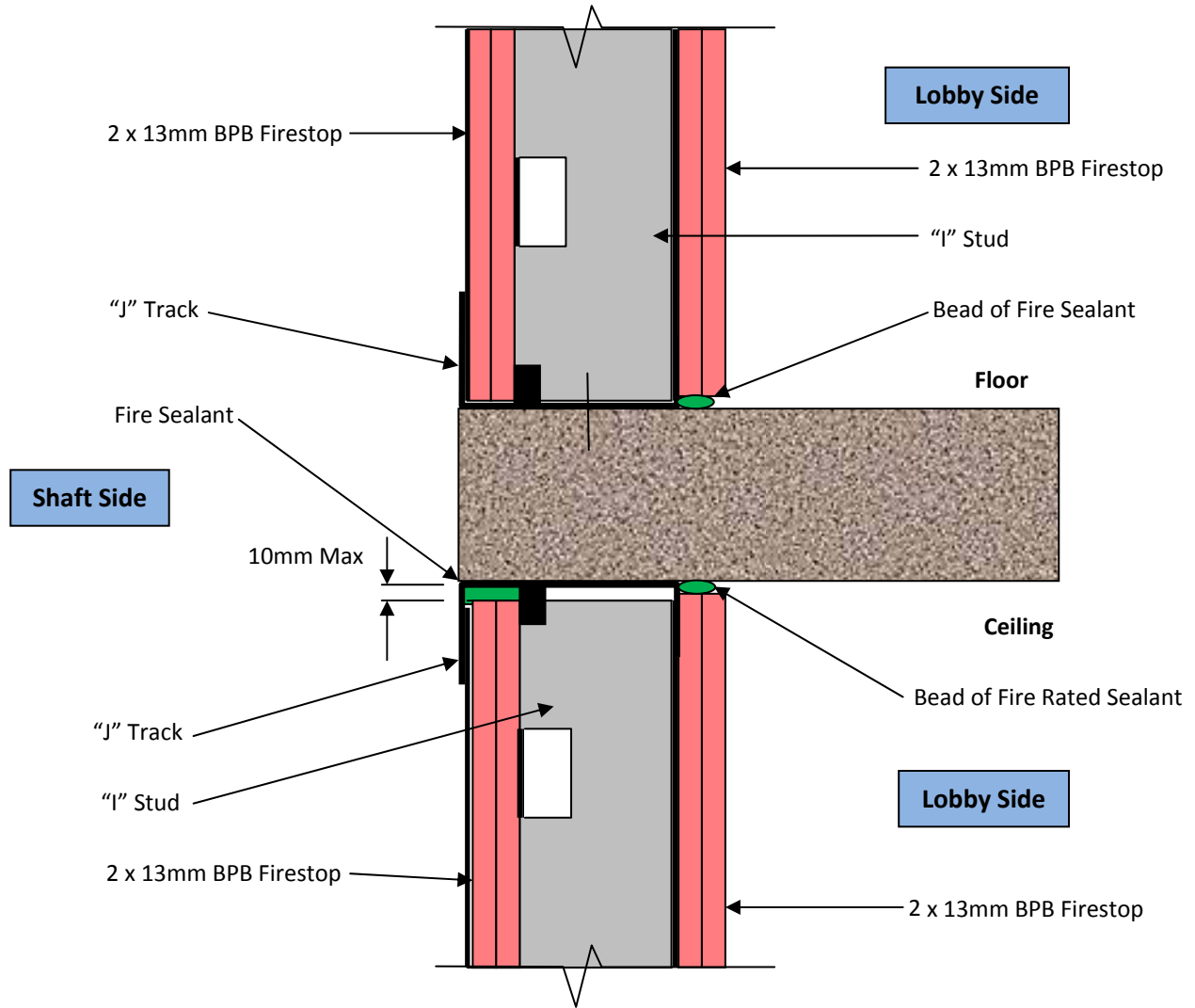


## Internal Corner Construction Detail



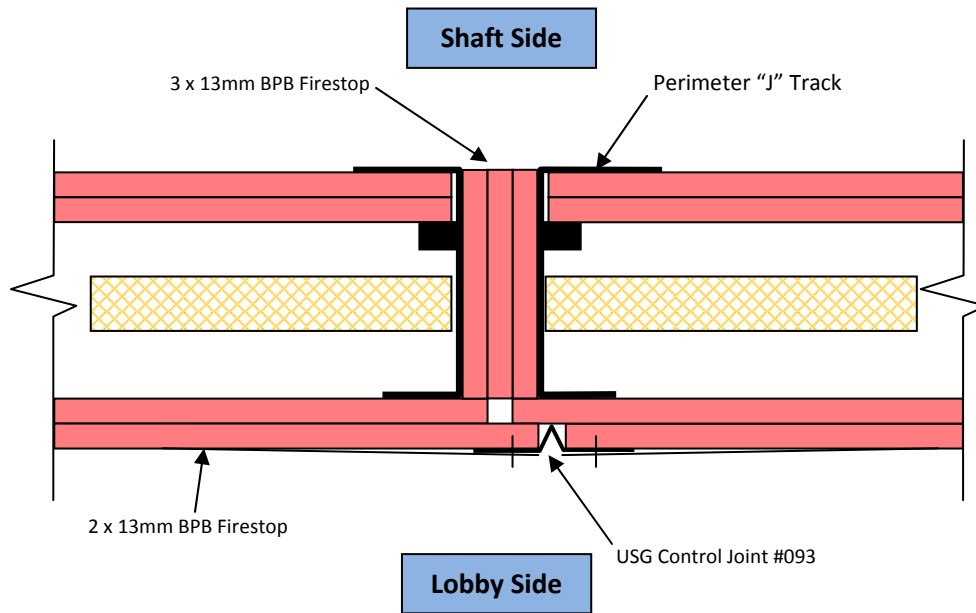
# BPB Shaftwall fire rated wall systems

## Base/Head Construction Detail

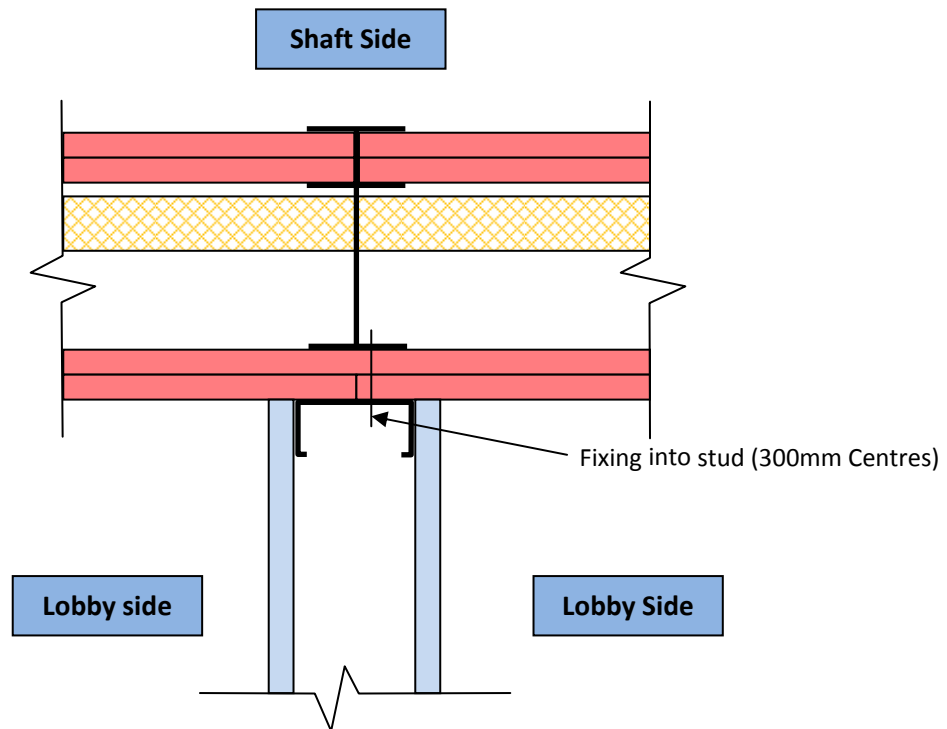


# BPB Shaftwall fire rated wall systems

## Control Joint Construction Detail



## Partition "T" Junction (On Stud)



Drawn	G Tully	
Fire Report Ref:	CSIRO FSV1361	
Acoustic Report Ref:	Internal Assessment	