

# Timber frame fire and acoustic rated systems

Product	BPB Plasterboard
System	Acoustic timber frame wall system
System Number	TGTA60
Fire Resistance Rating	-/60/60
Plasterboard System	1 Inner Layer 10mm BPB Firestop and 1 Outer Layer 10mm BPB Regular each side

## Framing

Double stud timber framing constructed using framing dimensions and height as determined by NZS 3604 stud tables for non-loadbearing walls. The minimum stud size is 90 x 45mm. Studs are placed at 600mm centres maximum and walls are separated by minimum 25mm with studs aligned.

## Wall Height

Framing dimensions and wall height are determined by NZS 3604 and stud tables for non-loadbearing partitions.

## Lining

One inner layer of 10.0mm BPB Firestop and one outer layer 10.0mm BPB Regular fixed each side of double stud timber framing. Use full-length sheets where possible.

## Fixing

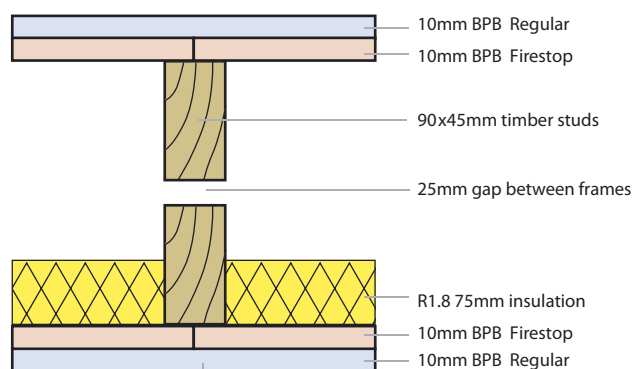
Fix inner and outer layers at minimum 300mm centres to perimeter of sheets and to intermediate studs. Horizontal and vertical fixing permitted. Nogs are not required. All vertical sheet edges must be made over solid framing.

## Acoustic Control

Wall cavities must be filled with R 1.8 nominal 75mm fibreglass insulation or other insulation of equivalent performance between studs on one wall only. Place a bead of acoustical sealant to the perimeter of the first layer and bed the second layer to the bead.

## Jointing

All fastener heads stopped and all sheet joints reinforced with paper jointing tape to outside layer only and stopped in accordance with AS/NZS 2589.1.



Fasteners	Drywall Screws
	12mm from sheet edge
Inner 10mm	32mm x 6g Bugle head
Outer 10mm	40mm x 7g Bugle head

