

# Timber frame fire and acoustic rated systems

Product	BPB Plasterboard
System	Acoustic timber frame wall system
System Number	TGTLA30a3
Fire Resistance Rating	30/30/30
Plasterboard System	1 Layer 13mm BPB Aquastop one side and 2 Layers 13mm BPB Aquastop other side

## Framing

Double stud timber framing constructed using framing dimensions and height as determined by NZS 3604 stud tables for loadbearing walls. Minimum stud size is 90 x 45mm. Studs are placed at 600mm centres maximum and walls are separated by minimum 25mm with studs aligned.

## Wall Height

Framing dimensions and wall height are determined by NZS 3604 and stud tables for loadbearing partitions.

## Lining

One layer of 13.0mm BPB Aquastop fixed one side and two layers of 13.0mm BPB Aquastop fixed other side of double stud timber framing. Using full-length sheets where possible.

## Fixing

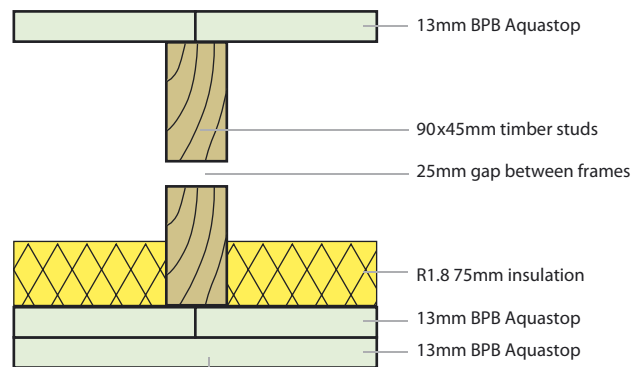
Fix inner and outer layers at minimum 200mm centres to perimeter of sheets and to 300mm to intermediate studs. Horizontal and vertical fixing permitted. Nogs are at 800mm for vertical fixing and 1200mm for horizontal fixing. All sheet edges must be made over solid framing.

## Acoustic Control

Wall cavities must be filled with R1.8 nominal 75mm fibreglass insulation or other insulation of equivalent performance between studs on one wall only. Place a bead of acoustical sealant to the perimeter of the first layer and bed the second layer to the bead.

## Jointing

All fastener heads stopped and all sheet joints reinforced with paper jointing tape to outside layer only and stopped in accordance with AS/NZS 2589.1.



Fasteners	Drywall Screws
	12mm from sheet edge
Inner 13mm	40mm x 6g Bugle head
Outer 13mm	50mm x 7g Bugle head

