

Product	BPB Plasterboard
System	Acoustic timber frame wall system
System Number	TGTLA60a
Fire Resistance Rating	60/60/60
Plasterboard System	2 Layers 10mm BPB Firestop each side

Framing

Double Stud Timber framing constructed using framing dimensions and the height as determined by NZS 3604 stud tables for loadbearing walls. Minimum stud size 90x45mm. Studs are placed at 600mm centres maximum and walls are separated by minimum 25mm with studs aligned.

Wall Height

Framing dimensions and wall height are determined by NZS 3604 Stud tables for loadbearing partitions.

Lining

Two layers of 10.0mm BPB Firestop fixed each side of double stud timber framing. Use full length sheets where possible.

Fixing

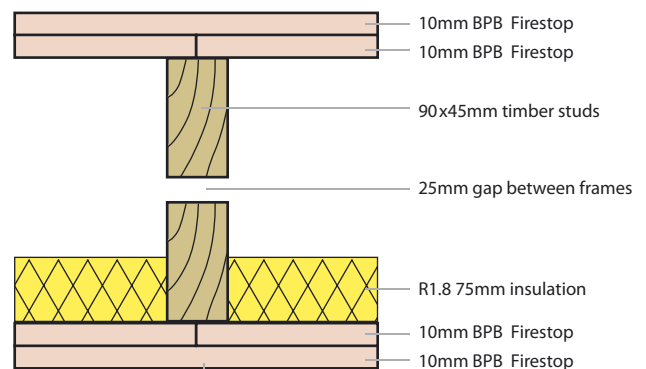
Fix inner and outer layers at 300mm centres to sheet perimeter and to intermediate studs. Horizontal and vertical fixing permitted. Nogs are not required. All vertical sheet edges must be made over solid framing.

Acoustic Control

Wall cavities must be fitted with R 1.8 normal 75mm fibreglass insulation or other insulation of equivalent performance between studs on one wall only. Place a bead of acoustical sealant to the perimeter of the first layer and bed the second layer to the bead.

Jointing

All fastener heads stopped and all sheet joints reinforced with paper jointing tape to outside layer only and stopped in accordance with the AS/NZS 2589.1.



Fasteners	Drywall Screws
	12mm from sheet edge
Inner 10mm	32mm x 6g Bugle head
Outer 10mm	40mm x 7g Bugle head

