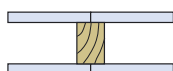


Summary Table - Timber Frame Fire Rated Systems

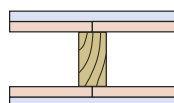
Timber frame fire rated systems

Construction

- Timber framing constructed using dimensions and height as determined by NZS 3604 stud tables
- Use full-length sheets where possible. Horizontal and vertical fixing permitted. Sheet edges must be over solid framing. Sheet joints should be staggered between layers.
- Wall cavities are optionally filled with R1.8 nominal 75mm fibreglass insulation or equivalent.
- Fastener heads stopped. Sheet joints should be reinforced and stopped in accordance with AS/NZS 2589.1.
- Place a bead of fire rated sealant to the perimeter of the first layer and bed the second layer to the bead.



1 One layer of board each side of timber studs at 600mm centres. Fasten with Bugle head, Drywall Screws,
10mm: 32mm x 6g
13mm: 40mm x 6g
16mm: 40mm x 6g



2 Two layers of board each side of timber studs at 600mm centres. Fasten with Bugle head, Drywall Screws,
Inner 10mm: 32mm x 6g
Inner 13mm: 40mm x 6g
Inner 16mm: 40mm x 6g
Outer 10mm: 40mm x 7g
Outer 16mm: 50mm x 7g

Fire Rating	Detail	BPB System	Fire Rating	Board	Layers	Thickness mm	Load Bearing or Non Load Bearing	Stud wall construction	Stud size mm	Stud wall gap mm	Stud centres mm	Insulation type	Insulation thickness mm	Board Fixing centres mm	Weight of system per m ² , kg	STC Rating	Page
Timber frame fire rated systems																	
15	1	TGT15	-/15/15	BPB Regular or Aquastop	1/1	10	NLB	Single	90x45		600			300	13.70		10
30	1	TGT30	-/30/30	BPB Firestop	1/1	10	NLB	Single	75x45		600			300	15.52		11
	1	TGT30a	-/30/30	BPB Regular	1/1	13	NLB	Single	90x45		600			150	17.32		12
60	1	TGTL30	30/30/30	BPB Firestop	1/1	10	LB	Single	75x45		600			300	15.52	40	13
	1	TGT60	-/60/60	BPB Firestop	1/1	13	NLB	Single	75x45		600			200	20.16		14
	2	TGT60a	-/60/60	BPB Firestop + Regular	2/2	10	NLB	Single	90x45		600			300	29.22		15
	1	TGTL60	60/60/60	BPB Firestop	1/1	13	LB	Single	90x45		600			200	20.16		16
90	1	TGTL60a	60/60/60	BPB Firestop	1/1	16	LB	Single	90x45		600			200	24.86		17
	2	TGTL90	90/90/90	BPB Firestop	2/2	10/13	LB	Single	90x45		600			200	35.68		18
	2	TGTL90a	90/90/90	BPB Firestop	2/2	16	LB	Single	75x40		600			200	49.72		19
120	2	TGTL120	120/120/120	BPB Firestop	2/2	16	LB	Single	90x45		600			200	49.72		20