

# Timber or steel universal wall fire rated systems

Product	BPB Plasterboard
System	Universal wall system
System Number	TGUW30
Fire Resistance Rating	30/30/30
Plasterboard System	1 Inner Layer 10mm BPB Firestop and 1 Outer Layer 10mm BPB Regular

## Framing and Wall Height

Timber - Timber frame is constructed using framing dimensions and height as determined by NZS 3604 stud tables. The minimum stud size is 75 x 45mm for non-loadbearing and 90 x 45mm for loadbearing walls.

Steel - Steel frame is separately designed for serviceability and ultimate loading at ambient temperatures to NZS 3604. Minimum stud size is 35 x 64 x 0.55mm for loadbearing systems. Maximum wall height is 3 metres.

## Lining

One inner layer of 10.0mm BPB Firestop and one outer layer of 10mm BPB Regular lined on the fire exposed face. Use full-length sheets where possible. Wall sheathing to the fire unexposed face made from materials which do not ignite or melt at temperatures of 250 degrees C or more.

## Fixing

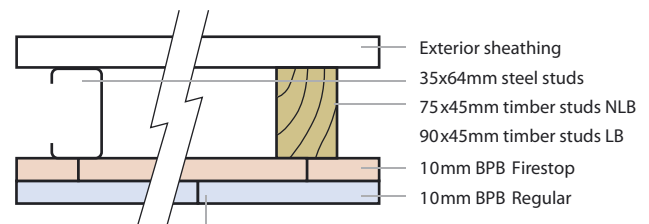
Fix sheets at 300mm centres to perimeter of sheets and to intermediate studs. Fixings should start at 50mm from top or bottom of the wall. Sheet joints staggered between layers. Horizontal and vertical fixing permitted. Nogs are at 800mm centres for vertical lining and 1200mm centres for horizontal lining. All sheet edges must be made over solid framing.

## Insulation

Wall cavities are optionally filled with R 1.8 nominal 75mm fibreglass insulation or equivalent.

## Jointing

All fastener heads stopped and all sheet joints reinforced with paper jointing tape to outside layer only and stopped in accordance with AS/NZS 2589.1.



Fasteners	Drywall Screws
	12mm from sheet edge
Inner 10mm	32mm x 6g Bugle head
Outer 10mm	40mm x 7g Bugle head